

**abilis** iF  *flow*DOCS

**Together for greater success**

**DIGITAL BUSINESS PROCESSES FROM A SINGLE SOURCE**



**SUCCESSFUL  
TOGETHER.**



### **LONG-TERM SECURITY**

Backed-up by abilis - an experienced and longstanding SAP Gold Partner – the flowDOCS Software GmbH provides their customers with the planning security that they need and can grow with.



### **SAP-CERTIFIED SOLUTIONS**

Our SAP-certified solutions are directly integrated into the SAP system and unfold entirely in the SAP namespace. We are offering various S/4HANA industry solutions for the smooth and fast implementation of SAP S/4HANA.



### **COMPREHENSIVE SAP SUPPORT**

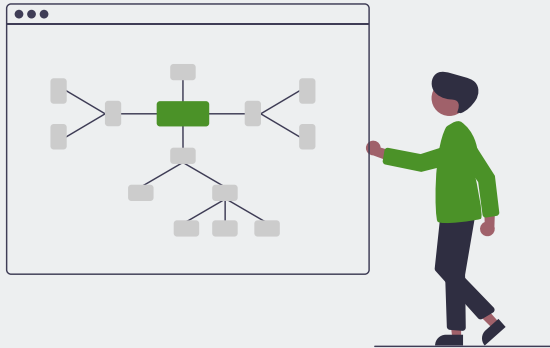
Beyond expanding the SAP portfolio with solutions for process automation, we are offering you certified SAP solutions across modules and great added value for S/4HANA implementation. abilis and flowDOCS are your provider for all-in-one solutions.



### **A PARTNER FOR THE PRESENT & THE FUTURE**

flowDOCS means digitalisation, automation and innovation – solutions for today and the future that are tailored to the needs and desires of customers and the present time. We are more than happy to develop your solution in cooperation with you.

# Process automation inside SAP



**SAP® Certified**  
Integration with SAP® S/4HANA

**SAP® Certified**  
Powered by SAP NetWeaver®

With the **flowDOCS solutions**, you can carry out processes fast, simple and successfully inside SAP. Through them, you can automate a number of business processes while users continue to work in their familiar SAP environment. Our solutions can be implemented on SAP ERP ECC and SAP S/4HANA.

**invoiceLINE**

Automatically record and process incoming invoices

**confirmationLINE**

Automated processing of order confirmations

**orderingLINE**

Process orders simply and centrally

**avisLINE**

Process customers' payment advice notes faster

**offeringLINE**

Automated offer examination and processing

**dunningLINE**

Communicate dunning processes imminently and purposefully

# SAP Services

## Implementation, automation & support

As a SAP Gold Partner, we newly implement SAP for our customers or migrate their existing ERP system to S/4HANA. To provide our customers with a SAP system tailored to their industry, we have developed two S/4HANA industry solutions: **abilis4production & abilis4logistics**. With these solutions, we can implement SAP S/4HANA faster, closer to industry standards, and nevertheless 100% flexible and customisable.



We integrate ready-made add-ons to ensure that the SAP system can be tailored to our customers' individual requirements. With our **SAP AddOns** by abilis we can automate and accelerate crucial business processes – for instance in the areas of export, purchasing, production, disposition, etc.

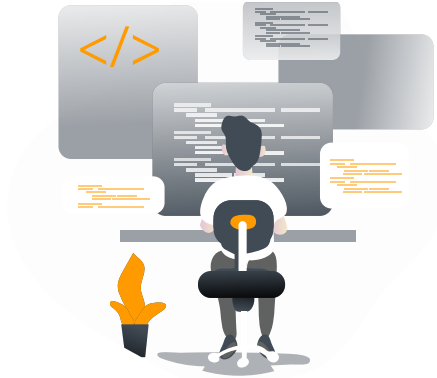
Continuing to support our customers after SAP implementation, we are offering comprehensive **SAP application management support**. Furthermore, our experts at the SAP base ensure the smooth running of processes and non-stop availability of systems.



Satisfied customers are the best reference



## IT FULL-RANGE SUPPORT – 100% reliable



### ☑ Managed IT services & support

Managed IT services as short-term holiday cover, long-term full-range support or partial support.

### ☑ Hosting in our on-site data centre

We are hosting your SAP and IT systems reliably and securely in our ISO 27001-certified data centre.

### ☑ IT management as needed

From client management, over network connection, to the entire infrastructure – we support you on a permanent basis.

# IT support & process optimisation

## CONFIGURE. PRICE. QUOTE. – flexible CPQ solution

### ☑ Configure & calculate

calcIT provides you with flexible options for the effective calculation and configuration of projects.

### ☑ Automated offer creation

Create automated offers and editable documents with a few clicks.

### ☑ Extensive integration options

Beside a direct integration in SAP, interfaces allow for a comprehensive integration into your existing software structure.

# calcIT



## We continue to grow

Following the merger of abilis and flowDOCS, we count over 150 members of staff – and we are not planning to stop here. To be able to support our customers both online and on-site, we have offices across Germany and expand yearly.

As a medium-sized company ourselves, we understand the needs of other medium-sized enterprises, but are equally well equipped to cater for larger companies.

**abilis** **it.**  
IT-Services & Consulting

  
*automate business processes*

### Karlsruhe

Lorenzstraße 8  
76297 Stutensee  
+49 7244 70 80 0  
info@abilis.de

### Munich

Mühlendorfstraße 8  
81671 Munich  
+49 7244 70 80 0  
info@abilis.de

### Leonberg

Riedwiesenstraße 1  
71229 Leonberg  
+49 7152 35 60 58 0  
info@flowdocs.de

### Bonn

Heinrich-von-Stephan-Str. 7-9  
53175 Bonn  
+ 49 2282 86 499 0  
info@abilis.de